

Mini Flight Type Dishwasher



Features

- New design of washing arm that easy to dismantle and clean
- High efficiency wash pump with fully stainless steel impeller
- New design of washing arm with wide angle water jet type nozzle design, reach perfect washing quality and anti-clog
- Double layer door to prevent heat loss, energy saving, easy to operate and maintain
- Washing capacity reaches 1000~5000 plates by using frequency controller
- Whole machine is made of SUS304 stainless steel for durability, compliance with hygiene and anti-rot

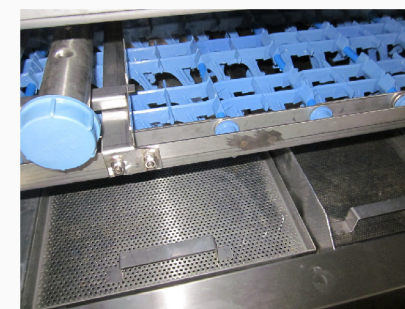
VT-F21DM

Mini Flight Type	2 Tank+1 Rinse
Dimension	3855*830*1650mm
Loading Dimension	530*420mm
Capacity	2.0~3.0m/min@360Racks/hr
Rinse Usage	5L/min
Wash Pump Power	1.5kW
Wash Tank Heater	15kW + 15kW
Booster Heater	36kW
Conveyor Motor	0.5kW
Power Supply	400V/50Hz/3ph
Steam Supply	90kg/hr
Electrical Loading	70kW/3.8kW

Dryer Optional:-
 Length 800mm
 Height 2050mm
 Motor Power 1.5kW
 Heater 9kW



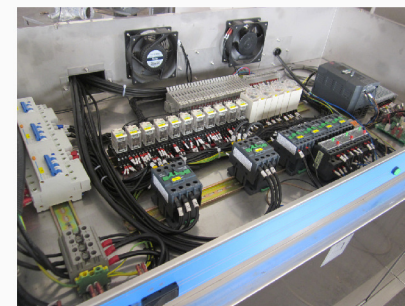
Special process wash arm set



Strainer design easy to clean



Nozzle design with wide angle water jet type



Electrical control box with safety protection control system easy to operate and maintain

